

Helgoland

Carlotta de Bevilacqua

Artemide[®]

helgoland

Helgoland

Carlotta de Bevilacqua
2023

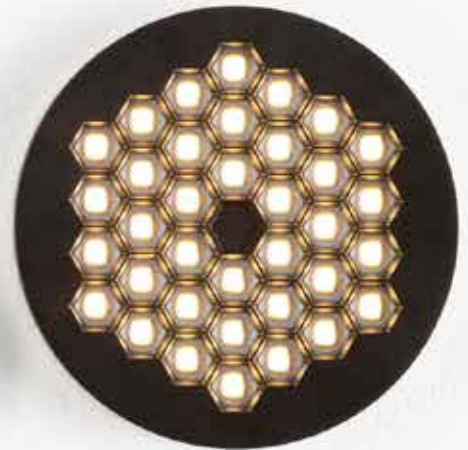
Helgoland is an efficient and perfectly controlled light principle that applies to an incremental, compact and optimised geometry, capable of casting good light into any space. The patented technology of the refractive optics is miniaturised and developed according to a hexagonal mesh that maximises the density of the luminous flux emitted. The hexagonal geometry makes it possible to place the elements side by side without wasting space, according to the shape of a honeycomb.

This model is inspired by nature, by the intelligence of bees. The geometry enables free, linear or radial-centric growth just as in these first versions of Helgoland.

→ PATENT OF INVENTION: OPTICS



Artemide
App

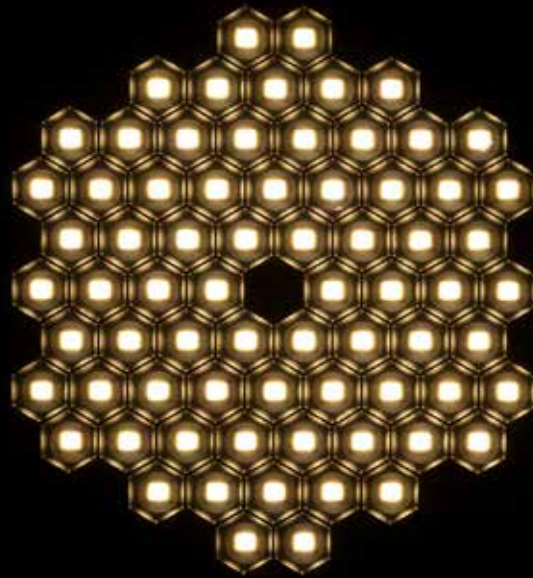


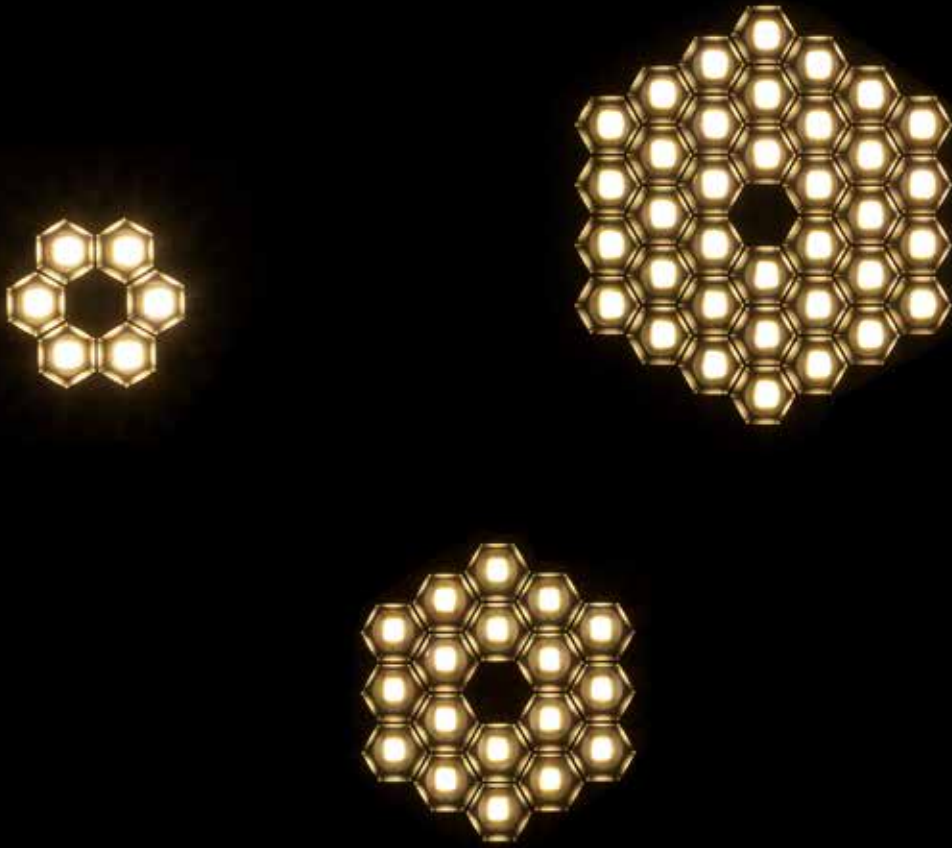
Scale 1:2

For further information on Helgoland
↪ visit [artemide.com](https://www.artemide.com)

Helgoland archipelago

Incremental optical geometry





Esarefractive lens

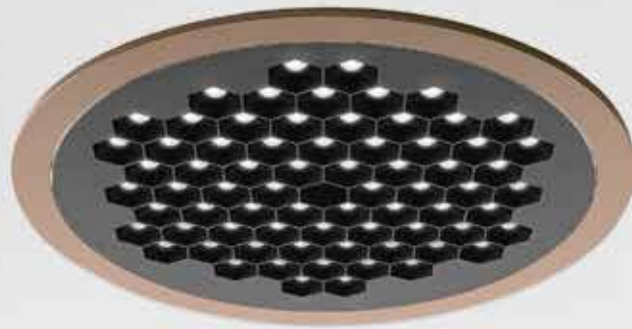
Maximized flux density per unit area

Scalable platform

Sustainable principles

Incremental principle

Multiple features



Four different performances

Five colour finishes

A wide range of installation types



Installation accessories



Trimless



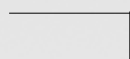
Trim



Light engine



Magnetic fixing



12,5 mm



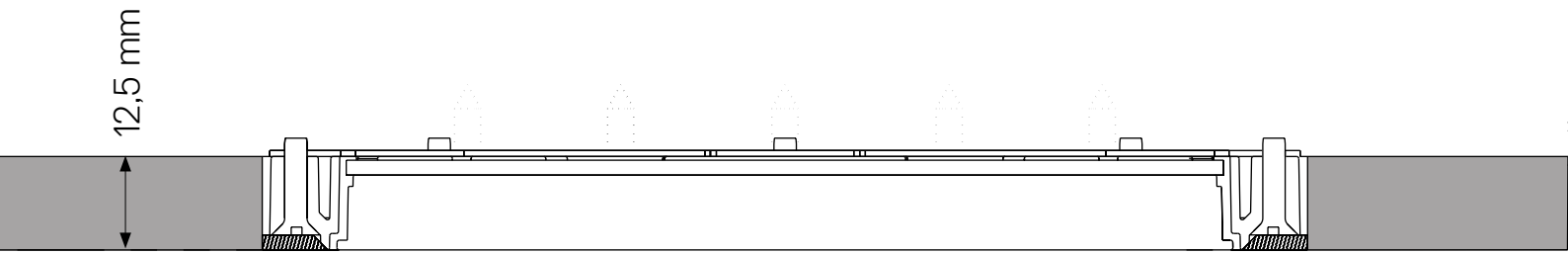
SMD no driver



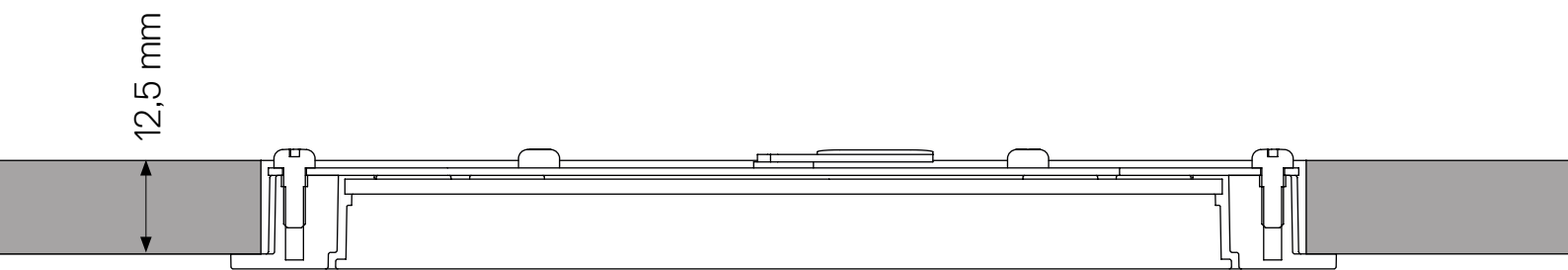
SMD Built-in driver

Collaborative Units

Helgoland has an optimised construction also with respect to the structure of the various versions. The light engine is in fact an element which can be combined through an easy magnetic fixing system with various accessories: for recessed version, with or without a frame, or ceiling installation, with or without driver, up to an adjustable arm that connects it to other systems and tracks in the collection.



Trimless

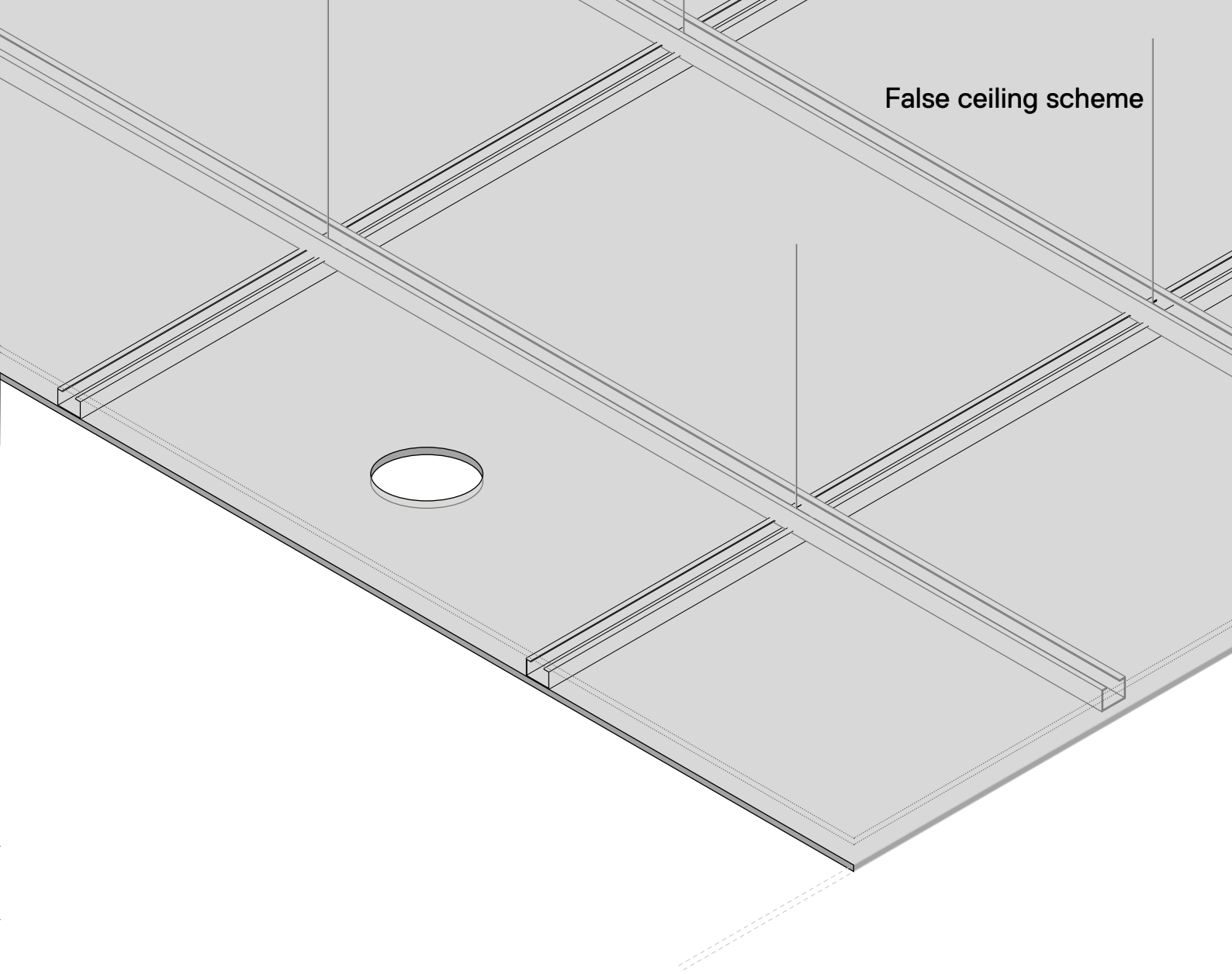


Trim

h 12.5 mm for Recessed version

The downlight can be integrated into the standard plasterboard thickness without interfering with the structural warping.

On demand for other thicknesses needed.



False ceiling scheme

Reduce to innovate

Thanks to its optimized structure and minimal dimensions, Helgoland recessed adapts to any environment at any time.

Furthermore, its thickness of 12.5 mm allows it to be integrated into the standard thickness of the plasterboard without interfering with the structural framework.

Affirming the spatial freedom of each project, Helgoland is the appropriate lighting solution for applications where the reduced thickness above the plasterboard ceiling represents an architectural constraint.



Workplaces

Desks area - Helgoland 160 Recessed trim XF 64°

Corridor - Helgoland 90 Recessed trim WF 48°





Hospitality

Helgoland 120 Recessed trimless WF 48°

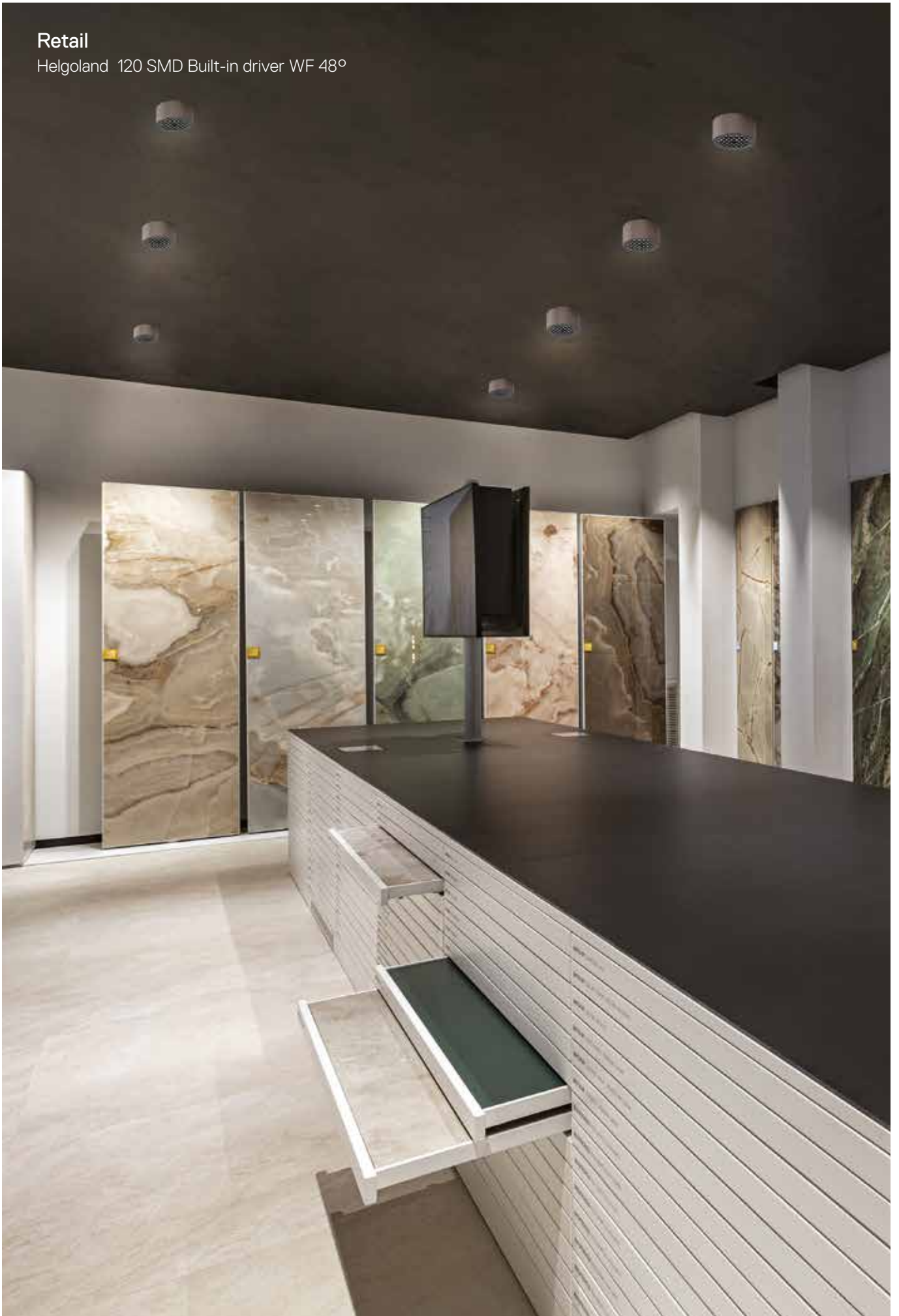


Museum

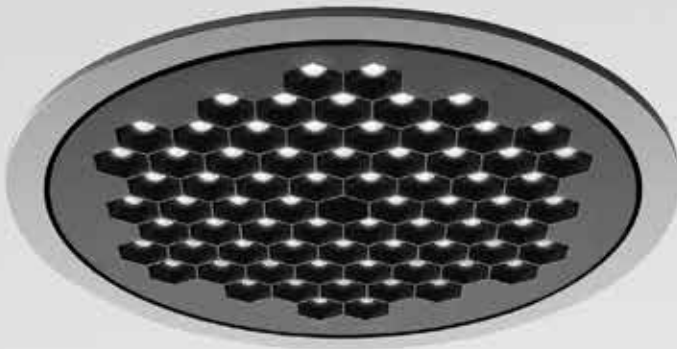
Helgoland 60 Recessed trimless FL 32°

Retail

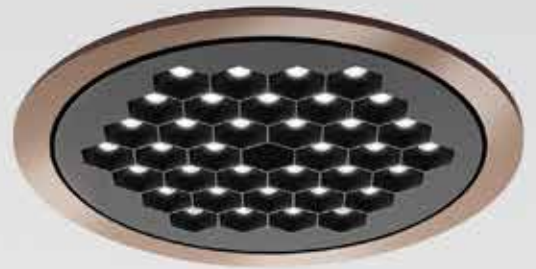
Helgoland 120 SMD Built-in driver WF 48°



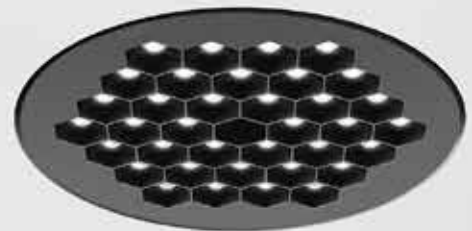
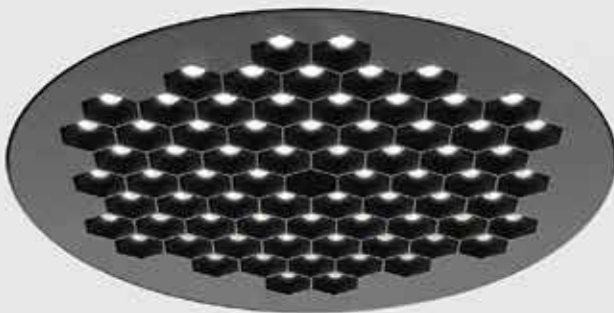
Trim



Helgoland 160



Helgoland 120



Trimless

Frame - Trim

- Black
- White
- Silver
- Copper
- Cobalt blue

Light engine

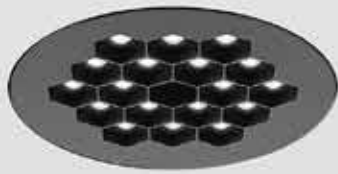
- Black



Helgoland 90



Helgoland 60

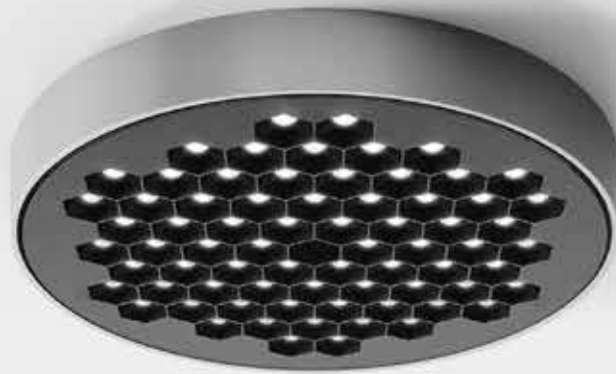


Helgoland

Recessed version



Helgoland 120



Helgoland 160

Frame - Trim

- Black
- White
- Silver
- Copper
- Cobalt blue

Light engine

- Black



Helgoland 60



Helgoland 90

Helgoland

SMD No driver version



Helgoland 160



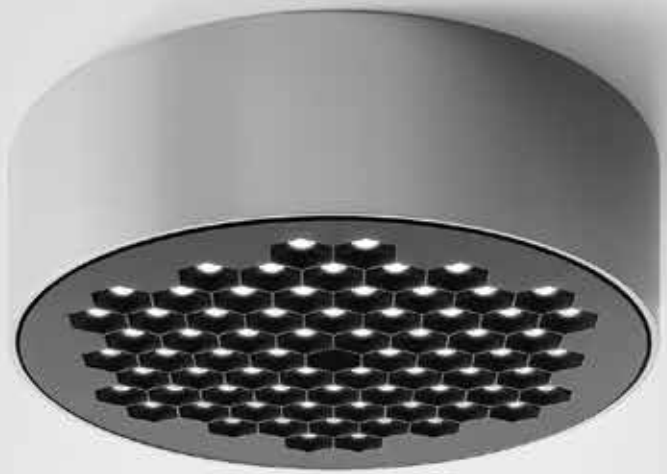
Helgoland 120

Frame - Trim

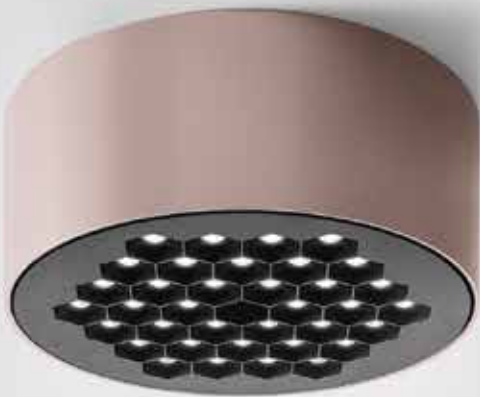
- Black
- White
- Silver
- Copper
- Cobalt blue

Light engine

- Black



Helgoland 160



Helgoland 120

Helgoland

SMD Built-in driver version

Responsible energy consumption

up to 150 lm/W

High efficiency
More than 80%

High uniformity
No multi-shadows

Extreme glare control
UGR<19

CRI 90

60 mm



90 mm



120 mm



160 mm



Helgoland 60 (6 LEDs)
Ø 60 x h 12,5 mm
Total power: 2,6W
3000K

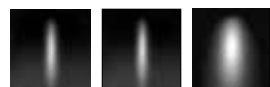
Helgoland 90 (18 LEDs)
Ø 90 x h 12,5 mm
Total power: 6W
3000K

Helgoland 120 (36 LEDs)
Ø 120 x h 12,5 mm
Total power: 8,5W
3000K

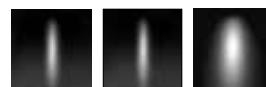
Helgoland 160 (72 LEDs)
Ø 160 x h 12,5 mm
Total power: 17W
3000K



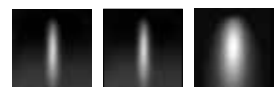
FL 36° 315lm
WF 48° 390lm
XF 64° 390lm



FL 36° 725lm
WF 48° 900lm
XF 64° 900lm



FL 36° 1050lm
WF 48° 1300lm
XF 64° 1300lm



FL 36° 2100lm
WF 48° 2600lm
XF 64° 2600m



FL 36° (2X18°)

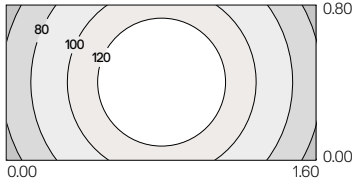


WL 48° (2X24°)

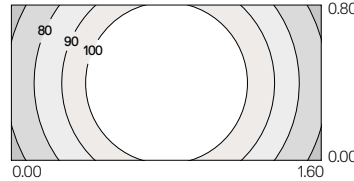


XF 64° (2X32°)

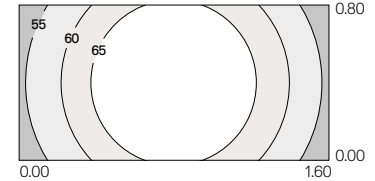
Helgoland 60
3000K



Installation h 3200 mm - Desk h 750 mm
 $E_{av} = 103 \text{ lx}$ $u_0 = 0,538$

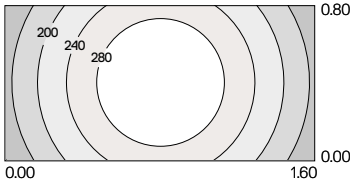


Installation h 3200 mm - Desk h 750 mm
 $E_{av} = 94 \text{ lx}$ $u_0 = 0,714$

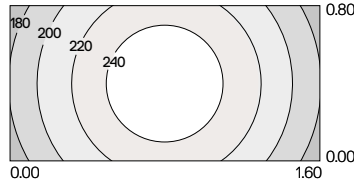


Installation h 3200 mm - Desk h 750 mm
 $E_{av} = 63 \text{ lx}$ $u_0 = 0,836$

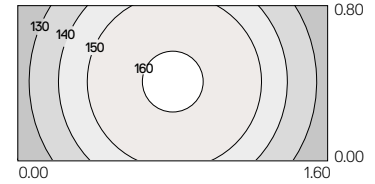
Helgoland 90
3000K



Installation h 3200 mm - Desk h 750 mm
 $E_{av} = 238 \text{ lx}$ $u_0 = 0,538$

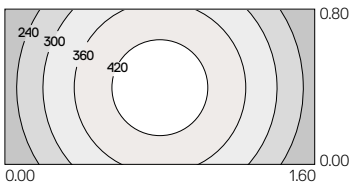


Installation h 3200 mm - Desk h 750 mm
 $E_{av} = 217 \text{ lx}$ $u_0 = 0,714$

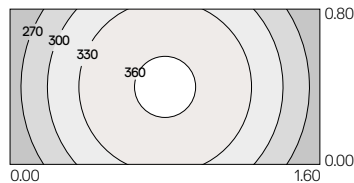


Installation h 3200 mm - Desk h 750 mm
 $E_{av} = 145 \text{ lx}$ $u_0 = 0,836$

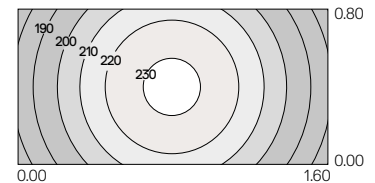
Helgoland 120
3000K



Installation h 3200 mm - Desk h 750 mm
 $E_{av} = 344 \text{ lx}$ $u_0 = 0,538$

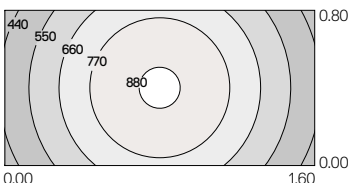


Installation h 3200 mm - Desk h 750 mm
 $E_{av} = 313 \text{ lx}$ $u_0 = 0,713$

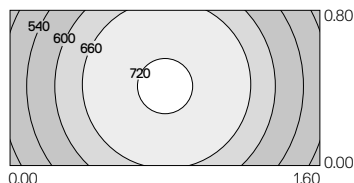


Installation h 3200 mm - Desk h 750 mm
 $E_{av} = 209 \text{ lx}$ $u_0 = 0,836$

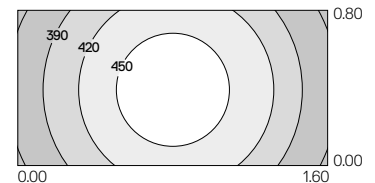
Helgoland 160
3000K



Installation h 3200 mm - Desk h 750 mm
 $E_{av} = 688 \text{ lx}$ $u_0 = 0,538$



Installation h 3200 mm - Desk h 750 mm
 $E_{av} = 625 \text{ lx}$ $u_0 = 0,712$



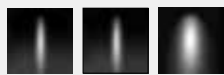
Installation h 3200 mm - Desk h 750 mm
 $E_{av} = 418 \text{ lx}$ $u_0 = 0,835$

HELGOLAND LIGHT ENGINE

Black



04



FL 36° WF 48° XF 64°

MacAdam 3SDCM
Life L70(17k) 102000h
CRI=90

IP40



Light Engine

W	Size	Beam	Flux	CCT*	Code
2,6W	60 mm	FL 36°	315lm	3000K	AX004: 04
			315lm	4000K	AX005: 04
		WF 48°	390lm	3000K	AX000: 04
			390lm	4000K	AX001: 04
		XF 64°	390lm	3000K	AX002: 04
			390lm	4000K	AX003: 04
6W	90 mm	FL 36°	725lm	3000K	AX054: 04
			725lm	4000K	AX055: 04
		WF 48°	900lm	3000K	AX050: 04
			900lm	4000K	AX051: 04
		XF 64°	900lm	3000K	AX052: 04
			900lm	4000K	AX053: 04
8,5W	120 mm	FL 36°	1050lm	3000K	AX104: 04
			1050lm	4000K	AX105: 04
		WF 48°	1300lm	3000K	AX100: 04
			1300lm	4000K	AX101: 04
		XF 64°	1300lm	3000K	AX102: 04
			1300lm	4000K	AX103: 04
17W	160 mm	FL 36°	2100lm	3000K	AX154: 04
			2100lm	4000K	AX155: 04
		WF 48°	2600lm	3000K	AX150: 04
			2600lm	4000K	AX151: 04
		XF 64°	2600lm	3000K	AX152: 04
			2600lm	4000K	AX153: 04



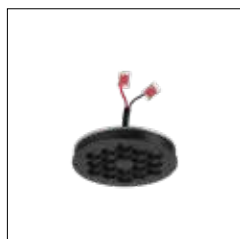
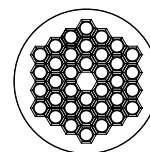
12,5 mm

60 mm



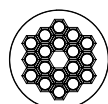
12,5 mm

120 mm



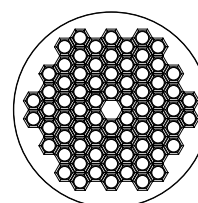
12,5 mm

90 mm



12,5 mm

160 mm



*2700K and 3500K on request.

Light engine to be completed with accessories for different type of installations.

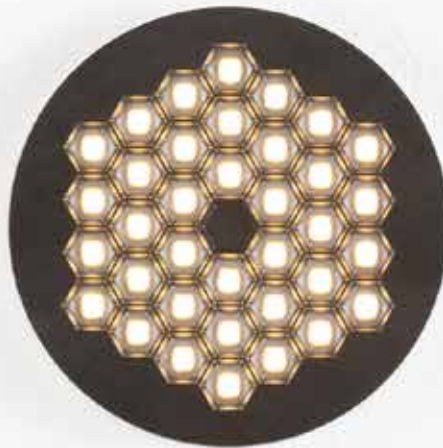
Light engine



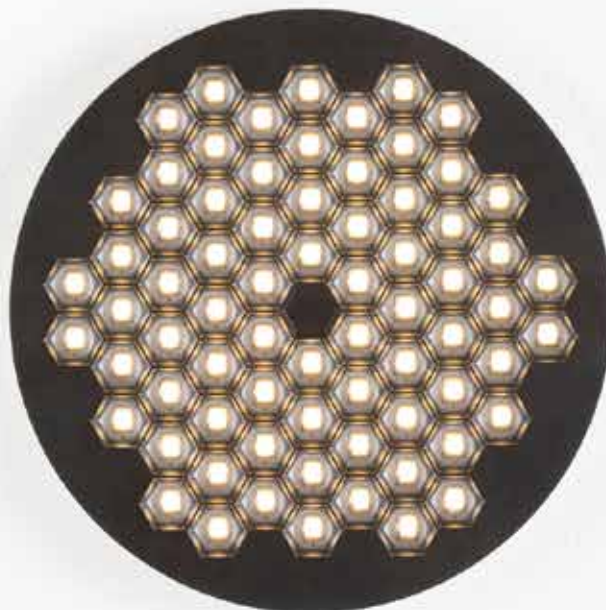
Helgoland 60



Helgoland 90



Helgoland 120



Helgoland 160

HELGOLAND ACCESSORIES



Light engine must be ordered separately.

Recessed

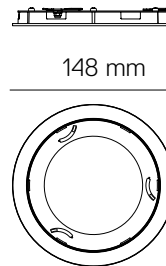
Frame	Type	Code
60mm	Trimless	AX50000
	Trim	AX501: 01/04/02/03/05
90mm	Trimless	AX55000
	Trim	AX551: 01/04/02/03/05
120mm	Trimless	AX60000
	Trim	AX601: 01/04/02/03/05
160mm	Trimless	AX65000
	Trim	AX651:01/04/02/03/05



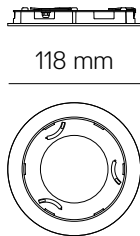
Trim



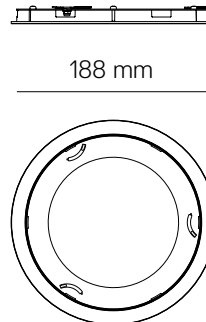
88 mm



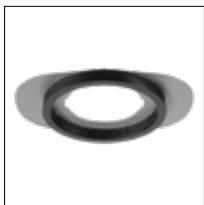
148 mm



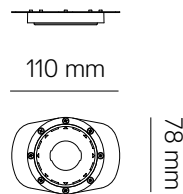
118 mm



188 mm

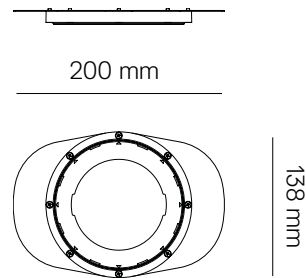


Trimless



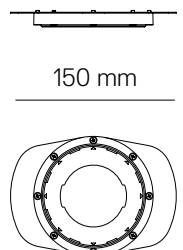
110 mm

78 mm



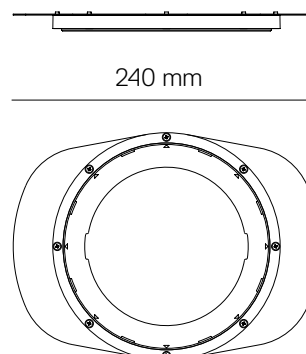
200 mm

138 mm



150 mm

108 mm



240 mm

178 mm

HELGOLAND ACCESSORIES

IP20

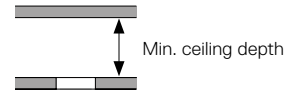


Power supply

Driver type	Code	L _{mm}	W _{mm}	H _{mm}	Circuit Braker	Max distance**	Current setting	V _e module	Min ceiling depth	Helgoland	
Undimmable	DV1037	146,5	42,5	22	A 16 - 30 B 16 - 50 C 16 - 70	20 m	300 mA	8,5 V	2 min - 4 max	150 mm	60 mm
							350 mA	17 V	2 max	90 mm	90 mm
							500 mA	17V	2 max	50 mm	120 mm
							500 mA	34V	1 max	30 mm	160 mm
DALI dimmable	DV1003	164	38	24,5	A 16 - 30 B 16 - 50 C 16 - 70	15 m	300 mA	8,5 V	2 min - 5 max	170 mm	60 mm
							350 mA	17 V	2 max	80 mm	90 mm
							500 mA	17V	2 max	50 mm	120 mm
							500 mA	34V	1 max	30 mm	160 mm
Artemide App	DV1104APP	124	79	22	A 16 - 15 B 16 - 30 C 16 - 50	15 m	350 mA	17 V	2 max	-	90 mm***
							500 mA	17V	2 max	70 mm	120 mm
							500 mA	34V	1 max	30 mm	160 mm

**See table related to wire sections on the instruction sheet.

***Driver must be removed.



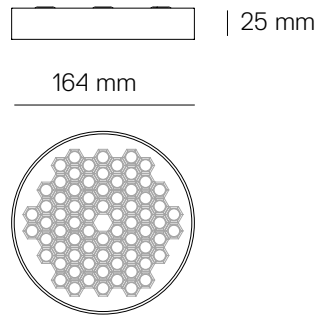
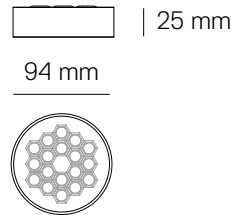
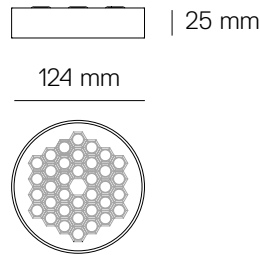
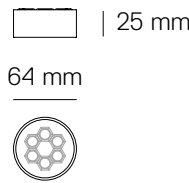
Recessed versions have separated drivers to be ordered.
Trim versions: driver substitution has to be done after frame removal.

HELGOLAND ACCESSORIES

White	Black	Cobalt blue	Copper	Silver	IP40
01	04	02	03	05	Light engine must be ordered separately.

SMD No driver

Frame	Type	Code
60 x h25 mm	No driver	AX510: 01/04/02/03/05
90 x h25 mm	No driver	AX560: 01/04/02/03/05
120 x h25 mm	No driver	AX610: 01/04/02/03/05
160 x h25 mm	No driver	AX660: 01/04/02/03/05



Driver type	Code	L _{mm}	W _{mm}	H _{mm}	Circuit Braker	Max distance**	Current setting	V _f	Helgoland	
Undimmable	DV1037	146,5	42,5	22	A 16 - 30 B 16 - 50 C 16 - 70	20 m	300 mA	8,5 V	2 min - 4 max	60 mm
							350 mA	17 V	2 max	90 mm
							500 mA	17V	2 max	120 mm
							500 mA	34V	1 max	160 mm
DALI dimmable	DV1003	164	38	24,5	A 16 - 30 B 16 - 50 C 16 - 70	15 m	300 mA	8,5 V	2 min - 5 max	60 mm
							350 mA	17 V	2 max	90 mm
							500 mA	17V	2 max	120 mm
							500 mA	34V	1 max	160 mm
Artemide App	DV1104APP	124	79	22	A 16 - 15 B 16 - 30 C 16 - 50	15 m	350 mA	17 V	2 max	90 mm
							500 mA	17V	2 max	120 mm
							500 mA	17V	2 max	120 mm
							500 mA	34V	1 max	160 mm

**See table related to wire sections on the instruction sheet.

SMD no driver versions have separated drivers to be ordered and they must be removed.

HELGOLAND ACCESSORIES

White	Black	Cobalt blue	Copper	Silver
				
01	04	02	03	05

IP40



Light engine must be ordered separately.

SMD Built-in driver

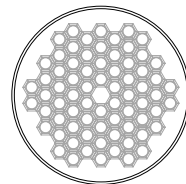
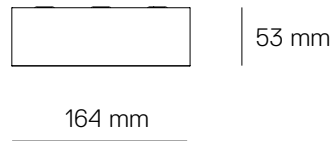
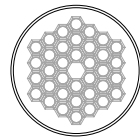
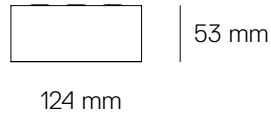
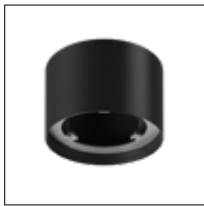
Frame	Type
120 x h53 mm	Built-in driver
160 x h53 mm	Built-in driver

Undimmable

Code
AX616: 01/04/02/03/05
AX666: 01/04/02/03/05

Dimmable DALI

Code
AX615: 01/04/02/03/05
AX665: 01/04/02/03/05







Headquarters

Artemide S.p.A.
Via Bergamo, 18
20006 Pregnana Milanese (MI), Italy
Tel. +39 02 93518.1
Tel. +39 02 93526.1
Numero verde 800 834 093
(from Italy only)
info@artemide.com
artemide.com

Artemide S.p.A.
si riserva la facoltà di modificare, in qualunque
momento e senza preavviso, le caratteristiche
tecniche degli elementi illustrati nel presente
catalogo.

Artemide S.p.A.
reserves the right to change, at any time and
without prior warning, the technical specifications
of any product illustrated in this catalogue.

Artemide S.p.A.
se réserve le droit de modifier, à n'importe
quel moment et sans préavis, les caractéristiques
techniques des éléments illustrés dans ce
catalogue.

Artemide S.p.A.
behält sich das Recht vor jederzeit und ohne
Ankündigung die technischen Daten der im
Katalog abgebildeten Produkte zu ändern.

Artemide S.p.A.
se reserva la facultad de modificar, en cualquier
y sin aviso previo, las características técnicas
de los elementos ilustrados en el presente
catálogo.

2024 updated version. V.1