

PARIS

Die Paris-Kollektion besteht aus 40 Farbtönen aus seidigem Samt. Der Stoff ist atmungsaktiv und besonders widerstandsfähig gegen Pilling und Abrieb.

Technische Eigenschaften:

Obergewebe: 100 % Polyester

Untergewebe: 100 % Polyester

Abriebtest: > 100.000

Pilling: 5

Farbechtheit: 5



cream



light grey



light blue



safira



steel



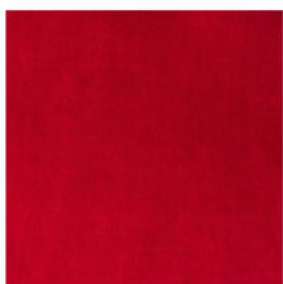
anthracite



pink



salmon



deep red



red rose



beige



champagne

PARIS



mostaza



mud



camel



lion



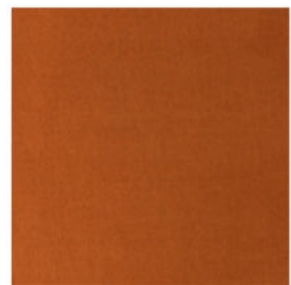
elephant



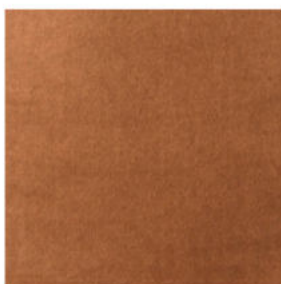
khaki



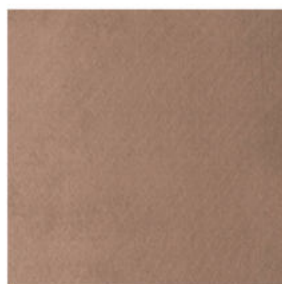
mouse



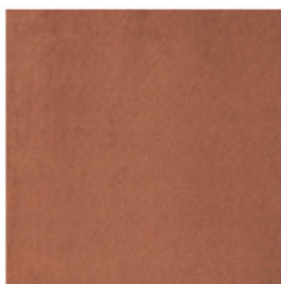
brick



teja



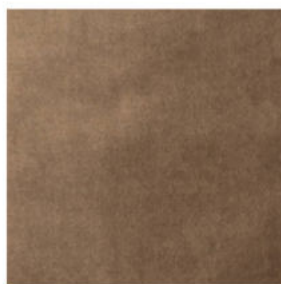
chocolate



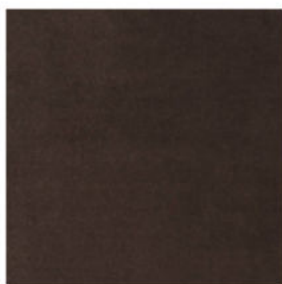
cuio



forest



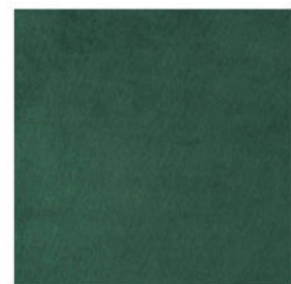
taupe



ocean



lima



green

PARIS



turquoise



ocean



petrol



dark blue



violet



wine



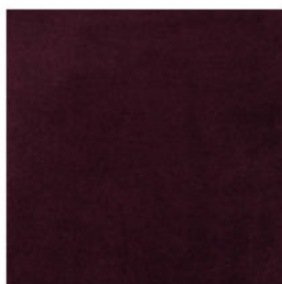
lavanda



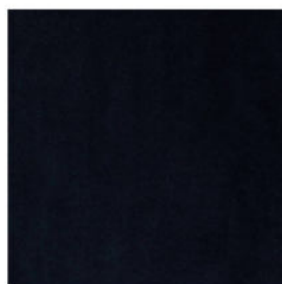
purple



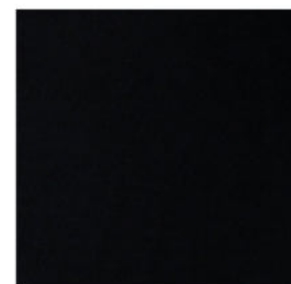
lilac



bordeaux



deep blue



black